

THE FUSE, SENSOR & CONTROL EXPERTS

2020

KEEPING YOUR
PRODUCTION
LINES RUNNING



WWW.KEMPSTONCONTROLS.CO.UK
SALES & SUPPORT - 01933 411411
SALES@KEMPSTONCONTROLS.CO.UK

Personal Protective Equipment

Keeping you safe at work

Kempston Controls has a comprehensive range of Personal Protective Equipment (PPE) products in stock ready for next working day delivery, including Protective Face Masks, Hand Sanitiser, Reusable Face Shields, Digital Thermometers, Coveralls and Nitrile Gloves.



Disposable
Gloves



Face
Shields



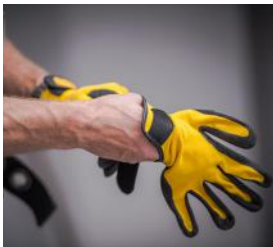
Coveralls



Mask &
Respirators



Safety
Goggles



Non-Disposable
Gloves



Ear
Defenders



Safety Boots &
Shoes



Hand
Sanitiser



Cleaning
Wipes



Medical
Thermometers



Hand Sanitising
Stations

Find out more about the full range of PPE online at www.kempstoncontrols.co.uk/ppe or call our dedicated sales team on +44 (0) 1933 411411



Learn More

What's new at Kempston Controls

Welcome to this edition of Keeping Your Production Lines Running. On behalf of the Directors, we would like to say a huge thank you to all our customers, suppliers and staff for their support in the fight against COVID-19. Over the past few months we have remained fully operational, serving front-line industries ensuring their cogs continue to turn 24/7.

Finally, we'd like to join our proud nation in saying a massive thank you to all NHS staff and all essential services at this time. Thank you!



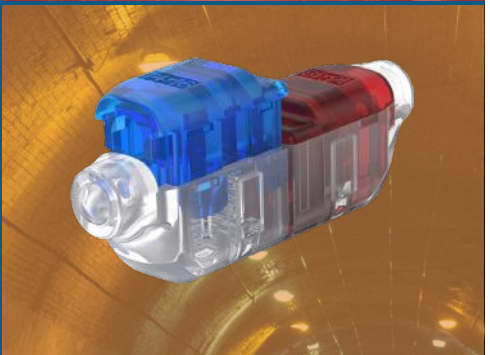
Life Is On | **Schneider**
Electric
Schneider Process



Honeywell
Honeywell Process, Measurement
& Control



Honeywell
Honeywell Safety

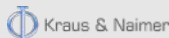


TE connectivity
entrelec
CoolSplice Connectors from
TE Connectivity

CONTROL, AUTOMATION & FUSES

Whether you need a simple fuse or perhaps a contactor, emergency stop switch or an advanced motor controller, Kempston Controls has decades of experience in providing the perfect products for your specific application. Call +44 (0) 1933 411411 for further details.

Control & Automation



Fuses



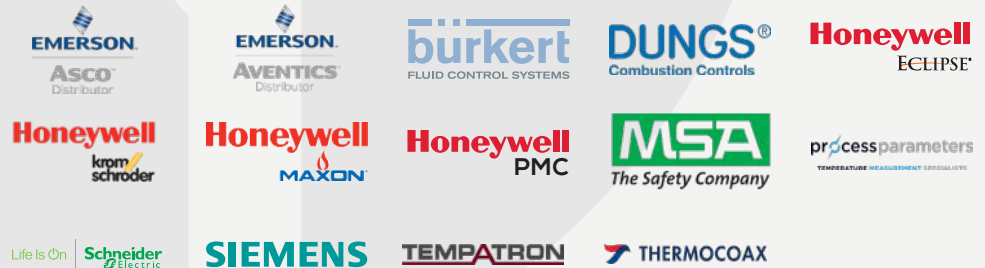
SENSORS & PROCESS

Both internally and externally we have a class leading technical team that can help you or your customer with forthcoming projects. On-site support is only a phone call away, ask your local representative for more details and open the door to the latest technology, advice and help to specify the right products for your application.

Sensors



Process



Personal Protective Equipment

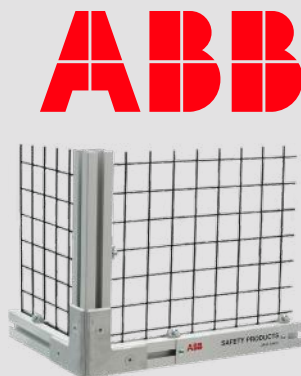


ABB Fencing System

Quick-Guard Safety Products

With a wide range of components, the Quick-Guard fencing system is ideal for a variety of applications from machine enclosures to preventing access to hazardous areas.

Thanks to ABB's patented screw-lock system, the Quick-Guard system can be tailored to meet any requirement and makes assembly and modification easy.



Easy to install

Lightweight aluminium profiles

Pre-mounted brackets with patented screw-lock system.

Easy to modify after installation



Speed up your projects

Range of materials and components

Fittings and mounting brackets for sensors, locks and switches from the Jokab Safety range.

ABB safety solutions offer a wide range of sensors and control devices suitable for a wide range of solutions:

Eden – Non-contact sensor

Orion – Optical safety device

Smile/Inca – Emergency Stop

Pressure sensitive safety mats

Contactors & electronic starters

Magne – Magnetic process lock

MKey – Mechanical key switch

EStrong – Emergency stop

GKey – Safety lock



Find out more about how ABB can deliver your machine safety solutions at www.kempstoncontrols.co.uk or call our dedicated sales team on +44 (0) 1933 411411 or email sales@kempstoncontrols.co.uk



Scan here to learn more

CleverLevel PL20 Level Switches

Limit Detection Without Parameterisation



Baumer



Parameterisation is a thing of the past with the CleverLevel PL20H and PL20S level switches. Unlike its predecessor, the PL20 Series adaptively adjusts to any media found in industrial and hygienic applications.

Features

- Adaptive trigger
- Problem solver for adhesive media
- Two adjustable switching outputs
- Analogue output provision
- Suitable for use in open tanks
- 360° visible multicolour LED
- IO-Link interface
- Ideal for a wide range of applications



Find out how the CleverLevel PL20 can benefit your applications online at kempstoncontrols.co.uk or call our dedicated sales team on +44 (0) 1933 411411 or email sales@kempstoncontrols.co.uk



Scan here to
learn more



**Small but powerful –
for your Smart Factory**
**Non-contact
Safety Sensor SRF**

The SRF (Safety RFID) is a non-contact safety sensor that monitors moveable safety guards such as doors, flaps and hoods.

Compact: small in size, flexible in use

Smart: suitable for Industry 4.0 with its intelligent diagnostic system

Cost-saving: due to a four-wire unshielded connection cable from sensor to sensor

Safe: up to PL e – even in series connection with high defeat protection



Find out more about the full range from Bernstein online:
www.kempstoncontrols.co.uk or call our dedicated sales
team on +44 (0) 1933 411411



Are you still using Danfoss Legacy Drives?

A selection of product families from the VLT® and VACON® drives range are in the legacy phase of their life cycle.

While your drives are still functional, Danfoss have stopped manufacturing certain models and are ending support on others.

Danfoss offers an extensive portfolio of low-voltage drives while Kempston Controls will help you select the optimal replacement drive for your application.

VLT 5000 *Legacy Phase Out*

The VLT 5000 is in the inactive phase and has reached the end of its life cycle.

No parts or service options are available and operating the drive may result in downtime due to wear or failure.

VLT Automation Drive FC 302

The Replacement

Control a range of operations from ordinary to servo-like applications on any machine or production line. Built using a modular open-technology platform the FC 302 is exceptionally adaptable and easy to program.

Contact us to discuss how Kempston Controls can support your replacement at www.kempstoncontrols.co.uk or call our dedicated sales team on +44 (0) 1933 411411 or email sales@kempstoncontrols.co.uk



SmartWire-DT from Eaton

Intelligent machine and system wiring

SmartWire-DT is a unique wiring solution that streamlines connection and communications inside and outside the cabinet.

Using just one single cable, connect sensors and actuators faster and safer than conventional methods.

Top Features:

- Wire panels seven to ten times faster
- Capable of wiring components up to 2000 feet away
- Easy integration with third-party PLCs
- Consolidate complex circuit wiring into a single, durable cable

85%
Less Build
Time



DIL Contactors

Powerful, efficient and versatile

Boasting reduced power consumption the DIL contactors from Eaton are powerful and efficient, ideal for a wide variety of applications.

Suitable for global use while covering the entire output range, from mini contactor relays (up to 7 A) all the way to vacuum contactors (up to 3,180 A).

What's more they can communicate via SmartWire-DT, which allows them to be controlled remotely.



Find out how SmartWire-DT can benefit your application call our dedicated sales team on +44 (0) 1933 411411

EATON
Powering Business Worldwide



Introducing Honeywell Safety **Honeywell** Full range of PPE now available

We are pleased to announce that Kempston Controls can now supply your business with a complete range of Personal Protective Equipment from Honeywell Safety.

The Honeywell Safety range includes coveralls, masks, both reusable and disposable gloves, goggles, ear defenders and shoes.

For safety boots, comfort should be second only to protection and the Honeywell Ultimate Footwear is no exception. Mimicking the foot's natural movement, the Ultimate Footwear wave concept enables smooth, effortless motion over any terrain.



The VeriShield range of ear defenders are designed to provide optimum comfort over long periods of use. Whether you're looking for traditional overhead ear defenders or to upgrade your hard hat, the VeriShield range is an ideal solution.



The CoreShield range combines exceptional cut resistance and comfort to provide excellent dexterity. Light and breathable, the Nitrile coating reduces hand fatigue and repels liquids. With touchscreen compatibility, they won't affect productivity.



Don't forget, we have access to the entire Honeywell Safety range, so if you need something else such as masks, disposable gloves, safety goggles or coveralls don't hesitate to get in touch on +44 (0) 1933 411411.



Scan here to
learn more

EL-SIE vs EL-USB

Which Data Logger is right for you?



EL-SIE	EL-USB
LEDs & Status Icons	LEDs
Large display	Basic or no display options
Sound & LED alarm	LED alarm
Enhanced memory	Standard memory
AAA Alkaline batteries	Long-life lithium battery
Multi-platform	Windows 7, 8 & 10
No software needed	Free PC software
Cloud & PC Data Storage	PC data storage
Enhanced accuracy	Standard accuracy
Designed for wall mounting	Option to wall mount

Data Logger Selection Tool

Take advantage of our Lascar Electronics Data Logger Selection Tool. With just a few clicks you can find the ideal data logger for your application.

Find out how Lascar Electronics can benefit your application, call our dedicated sales team on +44 (0) 1933 411411 or email sales@kempstoncontrols.co.uk



Scan here to learn more

Latest Products From Legrand



Hypra Prisinter

With a unique interlocked load break, the Prisinter is a key asset in the Hypra range and is available in 16, 32 and 63A ratings.

- Combined socket and switch design to save space, costs and installation time
- Maximum safety with a unique interlocked load break system
- Padlockable cover for added security
- Reliable, high-quality brass contact sleeves
- Stainless Steel screws-maximum durability connections



Bticino Door Entry Kits

Combining easy installation and secure access control, Legrand's two-wire door entry kits are ideal for most applications - all in one box!

Available as flexible video door entry kits or simple to use audio door entry kits.



Nuvo Speakers

Legrand's Nuvo range offers professional grade speakers and multiroom players that deliver exceptional sound quality and coverage to fill any room at the best price



Scan here to
learn more

Find out how Legrand can offer your business a wide range of solutions at www.kempstoncontrols.co.uk or call our dedicated sales team on +44 (0) 1933 411411 or email sales@kempstoncontrols.co.uk

The Panel Essentials Range

+44 (0) 1933 411411 | sales@kempstoncontrols.co.uk

1000 Pack | Plugtop Fuses

Ideal for keeping big jobs supplied

Panel Essentials KPE Plugtop Fuses are available in handy packs of 4, 10, 100 and 1000!

Compliant with BS1362

Available as 3A, 5A, 10A, 13A



CFK18 | Fuse Kit

The Ideal Kit for Contractors

Each Kit Contains 180 Fuses:

- 30 Fuses for standard 13A Plugs
- 60 Fast-Acting Glass 5x20mm Fuses
- 90 Slow Blow Glass 5x20mm Fuses

Panel Mounted | LED Link Lights

Professional, Powerful, Versatile

Unswitched P/N: **KPE4WLEDPLL/US**

Switched P/N: **KPE4WLEDPLL/S**

Features:

- Powerful 4W LED (520lm +/- 10%)
- IP20 protection
- 50,000 hrs life, energy saving Class A LEDs
- Cool white 6000K
- Temperature range -25°C to +50°C
- CE, UL, TUV approved
- Complete with clear diffuser
- Easy installation
- Added accessories available



+44 (0) 1933 411411

kempstoncontrols.co.uk/panel-essentials



Hazardous Area Solutions

PEPPERL+FUCHS



Mobile Devices

EX-HANDY 10
SMART-EX 02

State-of-the-art
Android powered
Smartphone and
Feature Phone for
Global Hazardous Areas.

Available for:
Zone 1/21 or Zone 2/22



Lighting Devices

LITE-EX PL 30E
LITE-EX PL 10E (H)

Shining a light on
workplace safety in
Global Hazardous
Areas.

Available for:
Zone 0/20 or Zone 1/21
or Zone 2/22



Mobile Computing

TAB-EX 02
(ANDROID)

State-of-the-Art
Industrial Smart
Mobility. Easy to use to
maximise productivity.

Available for:
Zone 1/21 or Zone 2/22

Signaling Devices



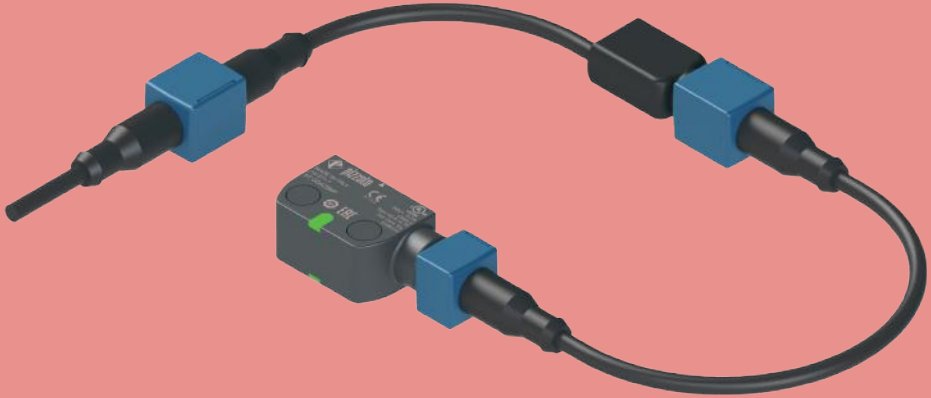
Pepperl+Fuchs' comprehensive range of signalling products are certified for use throughout the world in hazardous areas.

With audible, visual and combination devices available, the Pepperl+Fuchs' range of signaling devices is ideal for any application.

Learn more about how P+F can suit your ATEX application online or call our sales team on +44 (0) 1933 411411 or email sales@kempstoncontrols.co.uk

ST G series safety sensors with VF PC safety seals

The new Pizzato Elettrica Compact ST G series RFID safety sensors, with 22mm mounting and multicolour RGB diagnostics LED.



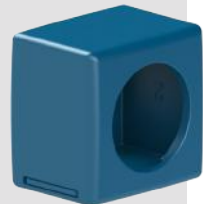
ST G series' main features:

- Compact, monolithic housing, free of encapsulation resins
- Easy installation thanks to the symmetrical housing
- Standard mount hole spacing (22 mm)
- Left of right hand door orientation
- Tamper protection screw protection caps
- Compatible with all ST series actuators
- Protection degrees IP67, IP69K

To increase the safety level you can install the ST G sensors together with VF PC series safety seals for M12 connectors.

VF PC series' main features:

- Quick and easy installation
- Compatible with all devices with M12 co-moulded connector
- Also suitable for junctions between cables with male/female connectors
- Variants available in blue technopolymer, detectable with optical vision technologies, X-rays or metal detectors



Find out how the ST G and VF PC series can benefit your applications online at www.kempstoncontrols.co.uk or call our dedicated sales team on +44 (0) 1933 411411



KEMPSTON
CONTROLS



Life Is On

Schneider
Electric

Schneider Electric Process Instrumentation Authorised Distributor

As an authorised distributor of Schneider Electric Process Instrumentation products, we will now be stocking a range of Schneider's market-leading process control solutions, which are all tailored to meet your specific application.

Instrumentation Includes:

- Pressure Measurement
- Flow Measurement
- Level Measurement
- E-Chem & Wet Analytical
- Temperature Measurement
- Valve Positioners

Applications include but are not limited to:

- Oil & Gas
- Chemical
- Power & Utilities
- Food & Beverage
- Water



Find out how Schneider Electric Process Instrumentation can benefit your application at www.kempstoncontrols.co.uk or call our dedicated sales team on +44 (0) 1933 411411 or email sales@kempstoncontrols.co.uk



Scan here to
learn more



 **SENSOPART**

BlueLight from SensoPart

Photoelectric Sensors

Great for any application, ideal for extreme detection; BlueLight sensors are true all-rounders. Offering greater detection in unique applications, SensoParts' latest offering is ideal for not only dark objects but highly transparent objects too.



Features:

- Reliable detection of highly transparent or light absorbing objects
- Reliable detection at angles up to 90° (model dependant)
- World's first blue light sensor with background suppression in subminiature format
- Absolute background suppression using SensoPart BGS technology

Find out how SensoParts' BlueLight Photoelectric Sensors can transform your application at www.kempstoncontrols.co.uk or call our dedicated sales team on +44 (0) 1933 411411 or email sales@kempstoncontrols.co.uk



Scan here to
learn more



SICK

Sensor Intelligence.

Guided Wave Radar Level Probe **LFP Cubic from Sick**

Scan here to
learn more



Is your process experiencing unnecessary downtime due to unreliable Liquid Level Measurement & Control technologies such as Electromechanical Switches?

Have you considered using SICK Guided Wave Radar Level technology instead?

The LFP Cubic from SICK is a Guided Wave Radar Level probe for Measuring & Controlling a variety of Liquids.

Challenges with Electromechanical Switches:

- Media build-up causes parts to stick
- Liquid change impacts detection
- Moving parts increase wear and tear
- High maintenance

Advantages of Guided Wave Radar

- Immune to build-up
- Independent of liquid changes i.e. conductivity, viscosity, density, foaming etc
- No moving parts
- Maintenance free

Find out more about the full range of SICK LFP Cubic probes online: www.kempstoncontrols.co.uk or call our dedicated sales team on +44 (0) 1933 411411



**KEMPSTON
CONTROLS**



SIVACON 8PS busbar trunking systems

Energy and data successfully put on track

In the age of digitalisation, SIVACON 8PS busbar trunking systems offer a superior and innovative alternative to cables that's cost-effective, efficient, flexible, and safe.

SIVACON 8PS – BD01 system

Ideal for low electrical loads, the BD01 system offers modern and economical power supply solutions.

Features

- Current range from 40 A to 160 A
- The innovative alternative to cables
- Safe and reliable power supply for small consumers
- Ideal for use in smaller industries and trades

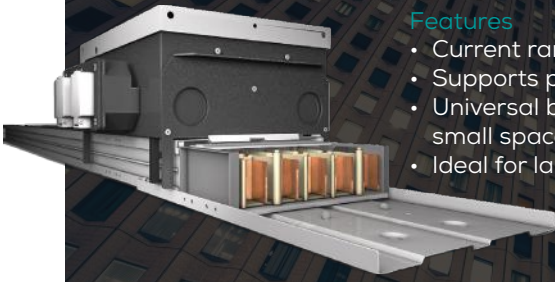


SIVACON 8PS – BD2 system

A universal solution to ensure high-performance within a small space. High-levels of safety features makes the BD2 system ideal for industrial applications & with powerline technology, can transmit data too.

Features

- Current range from 160 A to 1,250 A
- Supports powerline technology
- Universal busbar for high performance within a small space
- Ideal for larger industries and office buildings

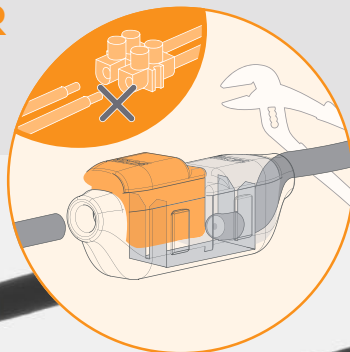


Find out how the Siemens SIVACON 8PS systems can benefit your applications online at www.kempstoncontrols.co.uk or call our dedicated sales team on +44 (0) 1933 411411 or email sales@kempstoncontrols.co.uk



THE INSTANT CONNECTOR

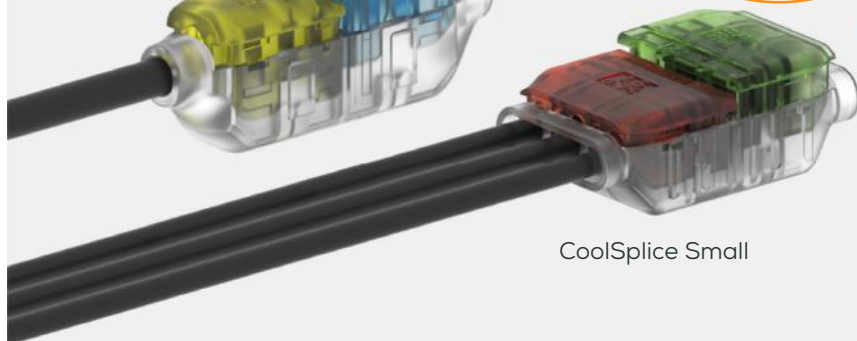
CoolSplice Connectors



CoolSplice Large



CoolSplice Small



CoolSplice Benefits

- Single wire (large) and dual-wire (standard) receptacles
- Standard size has gel option, large size comes with gel insert
- Range of colours, UV stabilised
- Suitable for solid and stranded wire
- Time-saving termination using standard tools, IDC technology
- Easy factory or field installation using push-button termination
- Moisture tight solution with an IPX8-rating
- Easy installation with no wire stripping/crimping

Find out more about the full CoolSplice Connector range from TE Entrelec online at www.kempstoncontrols.co.uk or call our dedicated sales team on +44 (0) 1933 411411



Scan here to
learn more

ATEX Hazardous Areas

New Section Now Available

Flammable gases or combustible dust can cause a life-threatening explosive atmosphere in the workplace.

Combine flammable material and a single source of ignition and you could cause an explosion, leading to injuries, possible loss of life and damage to property.

The Dangerous Substances and Explosive Atmospheres Regulations 2002 (DSEAR) requires employers to eliminate or control the risks from explosive atmospheres in the workplace.



Causes of Explosions

Three elements are required to cause an explosion: Fuel (gas or dust), Oxygen and an ignition source such as sparks or a short circuit.

The risk of an explosion is based on the probability of a fuel and oxygen mixture occurring over time.

Gas ATEX Zones

- 0 ZONE** Permanent or frequent presence of an explosive atmosphere
- 1 ZONE** Expected to occur occasionally during normal operation
- 2 ZONE** Unlikely to occur during normal operation or for only a short period of time



Dust ATEX Zones

- 20 ZONE** Permanent or frequent presence of an explosive atmosphere
- 21 ZONE** Expected to occur occasionally during normal operation
- 22 ZONE** Unlikely to occur during normal operation or for only a short period of time



Give our dedicated sales team a call on +44 (0) 1933 411411 or email sales@kempstoncontrols.co.uk to discuss your intrinsically safe requirements.



Scan here to learn more

Next Working Day Delivery Service

Our stocks are closely managed to ensure that we have the most sought-after items ready for delivery. If we receive your order before 4 pm Monday to Friday, we will despatch your goods the same day.

UPS allows us to provide more than 90% of the UK with a next-working day delivery, and a leading delivery service worldwide. They also enable us to provide vital live tracking information.

*A same-day delivery service is available if required. Please call +44 (0) 1933 411411 for more details.



Emergency Out of Hours Service

Out of hours ordering, available outside of normal working hours. Operating from 5.00 pm each day until normal opening hours at 8.00 am the next morning and during weekends.

Emergency contact number: 01933 656290

Terms and Conditions Apply



Web Chat

Quick and easy to use!

To enhance our customer's experience we have recently launched a live web-chat. Whether it's a sales quote, technical query or aftersales support, web chat gets you a response fast!



Head Office

Kempston Controls, Shirley Road, Rushden,
Northamptonshire, NN10 6BZ

01933 411411

sales@kempstoncontrols.co.uk

www.kempstoncontrols.co.uk

news.kempstoncontrols.co.uk

Find us on social media



/KempstonControls



/Kempstons



/company/Kempston-Controls



Kempston Controls



**KEMPSTON
CONTROLS**

